



## News from the Crane Association of New Zealand

## Crane Conference 2016

Registrations are now open for the 2016 Annual Crane Conference in Nelson.

Take the opportunity to attend this year's conference and network with your contemporaries, industry suppliers and crane manufacturers. New members, this is your opportunity to learn about the Association and meet the people who influence the New Zealand crane industry.

Greg Ward returns as the Master of Ceremonies and this year we have a day-entry category that includes plenary and evening networking sessions as well as an award dinner entry only.

It's your chance to catch up on what new technology has been introduced into the industry and to attend the speaking sessions that include:

- Hon Michael Woodhouse – Opening Speaker
- Phil Borkin – ANZ Economist
- Shane Fraser – Marsden Refinery Update and Decommissioning
- Hamish Scott – Project Manager (Winds) Meridian Energy
- Matua Parkinson – Keynote Speaker
- Pierre Vonk – H&S Manager HEB Construction
- Manufacturers Panel – Liebherr, Manitowoc, Tadano, and Terex
- CVIU, NZTA, WorkSafe, Skills, AMS, CICA



See sponsors, p2



## From the President

Dear members,

*Health and Safety is the topic of the day with the 4th of April launch of the Health and Safety at Work Act 2015 and supporting regulations. We are watching the many changes to ensure members have all the tools required of crane owners and operators.*

*The high-quality resources created by Council and members will ensure your business (PCBU) is well equipped for the workplace.*

*For example:*

- Crane Safety Manual
- Single and multiple crane lift plans
- Rigging plans
- Safety posters that include new risk management

*These tools help to ensure your team is managing risk appropriately and has the latest information.*

*continues next page*

## Newsletter of the

CRANE ASSOCIATION  
OF NEW ZEALAND INCORPORATED

Margan House

21 Fitzherbert Street, Thorndon

PO Box 12013, Wellington 6144

New Zealand

# 2016 Conference Sponsors

This year we have 24 booths well supported by our associate members and our regulars from Australia.

Our top sponsorship slot has not been taken up this year. However our sponsors are supporting us, and they are:

- 600t - Underwriting Agencies of Australia Pty Ltd



- 500t -The Skills Organisation



- 300t

- Liebherr



- Tidd Ross Todd Ltd



...for the long haul

- Manitowoc



- Project of the Year – UDC



- Function Sponsors

- Bridon Cookes,
- D.M.Standen Ltd,
- Terex Lifting Australia,
- Titan Construction Equipment Ltd
- ENZED
- JLT
- Cable Price
- Hitachi Sumitomo
- All Crane Sales and Services Ltd

There is no Lift of the Year at this conference.

If you are thinking of entering the Project of the Year, start gearing up for it.

If you have anyone on your team who has done something heroic or has contributed to the industry in an outstanding manner then consider nomination them for the Weighload Trophy.

Email [ceo@cranes.org.nz](mailto:ceo@cranes.org.nz) with your nomination and explain why we should consider the recipient.

## From the President contd.

*You will also find the Conference Committee have focused this year's programme on health and safety. That's a critical step in this new world for owners: a world in which you may need to prove due diligence.*

*If you're not familiar with the due diligence requirement yet, it has some thorns, to put it mildly: what would my peers do in this situation, and when did you last keep up to date on your crane safety knowledge? I will, of course, point inspectors at this year's conference as my evidence for taking reasonable steps. I suggest you do the same while Worksafe finds its feet. For information on "due diligence" read:*

*[www.business.govt.nz/worksafe/hswa/mythbusting/officers#diligence](http://www.business.govt.nz/worksafe/hswa/mythbusting/officers#diligence)*

*All the best,*

*Scott McLeod, Association President*

## New Members

We welcome the following new members:

- **Connell Contractors** Full Member (Full Cat A) Christchurch
- **Ashton Crane Hire** (Full Cat A) Auckland
- **Oil Imports Ltd** (Associate) Hastings
- **Wiri Wholesale Timber Ltd** (Full Cat A) Auckland
- **Keene Krib 2000 Ltd** (Associate) Wellington
- **Nauhria (Full Cat B)** Auckland
- **Contract Landscapes Limited** (Full Cat A) Auckland
- **Port Otago** (Full Cat A) Dunedin
- **Steelworks NZ Ltd** (Full Cat A) Mt Maunganui
- **MS Engineering Ltd** (Full Cat A) Warkworth
- **Port of Tauranga** (Full Cat A) Tauranga
- **Farra Engineering** (Cat B) Dunedin
- **Northport Ltd** (Full Cat A) Whangarei
- **PA Construction Pty Ltd t/a Pace Cranes** (Associate) NSW Australia
- **Heavy Lift Designs** (Associate) NSW Australia
- **BVT Consulting** (Associate) Christchurch
- **Industry Skills Ltd t/a iskills** (Associate) Tauranga

# From the Council

## Fighting Fund

Some members are asking why we have the fighting fund. We use it to lobby for changes in legislation, regulations and rules.

The Health and Safety at Work Act 2015 will change the PECPR 1999, the Approved Code of Practice and other laws that we will need to monitor closely.

A majority voted to establish the fund at the AGM. Voters included all categories of members except Life and Individual categories. We included an

Transport Authority. On an example permit for a crane, under section 3.11, it showed that "... the RCS would see it as unusual to divert such a vehicle."

## Position Papers

The Association is taking a stance on issues affecting the industry, and we have published the first of those position papers, about Telehandlers being used as cranes. See it on the website.

## Technical Subcommittee

The Technical Subcommittee is working hard on issues that

Subcommittee has focused on the Targeted Review of Qualifications (TRoQ).

There is a move away from Unit Standards as being the method of teaching and so NZQA has moved toward a Graduate Profile that shows the expected outcomes for the programme. This is much more flexible but we will have to define the profile to ensure that the qualification is robust.

Some other areas that are under consideration by the subcommittee are:

- Issues of engagement
- Added value qualifications
- Casual credits
  - Processing time
  - Service level agreements
  - Using Limited Credit Programme (LCP) instead of casual credits
- Assessor Forum
  - Forum to be conducted by the first quarter of 2016
  - Association to attend
- Leadership Forum



explanation of the fund with the annual invoices.

## Deviation from Route

There has been some noise about extending the number of kilometres that a heavy vehicle can be deviated to for weighing. The Association has fought this, with support from the Auckland

include:

- VDAM
- Permit Manual
- Axle Loading

## Education and Training Subcommittee

The Education and Training

## Passing of Basil Jordan

It is with regret that we announce the passing of Basil Jordan, a former President of the Power Crane Association from 1988-1990.

Basil was a foundation member of the Power Crane Association under Welders and Engineers Hastings Ltd and until recently owned Hawkes Bay Crane Hire Ltd.

A service was held at Hastings on Monday the 14th March to remember Basil.



**MANAGE**  
COMPANY

**CLAIMS**

Managing ACC *claims*  
used to be a headache  
...not anymore

Our online ManageCLAIMS toolkit provides tips, templates, guidance and support help manage all your ACC claims

Annual subscription normally \$349 +gst  
**SPECIAL INTRODUCTORY OFFER \$249 +gst**

SUBSCRIBE  
ONLINE  
Use 'CLAIMS'  
discount  
code

For more information, or to subscribe, visit our website [managecompany.co.nz](http://managecompany.co.nz)

**MANAGE**  
COMPANY

crane

highest standard – *safety first*



# Worker Engagement and Participation

## Understanding Your Duties

Under the Health and Safety at Work Act 2015 (HSWA), businesses have obligations and responsibilities to keep their employees healthy and safe at work. The Act also requires everyone to work together to improve health and safety.

Under HSWA, businesses have two related duties to engage with workers so they may participate in improving health and safety.

1. Ensure that worker's views on health and safety are matters are asked for and taken into account, and
2. Have clear, effective, and on-going ways for workers to suggest improvements or raise concerns on a day-to-day basis.

### Engagement

When employees engage in work health and safety, everyone benefits. Your business is a healthier and safer place for everyone, and performance and productivity increase.

HSWA sets out the main steps in the health and safety engagement process but, in short, you must:

- **Share information** on matters relating to health and safety (including specific issues you need to engage with workers on),
- Give your workers **time** to consider the issues,
- Give your workers a **reasonable opportunity** to:
  - **Express** their views and raise work health or safety concerns, and
  - **Contribute** to the decision-making process,
- Take into account the views of your workers, and
- Advise your workers of the **outcomes** in a timely way.

All businesses should regularly engage with their workers.

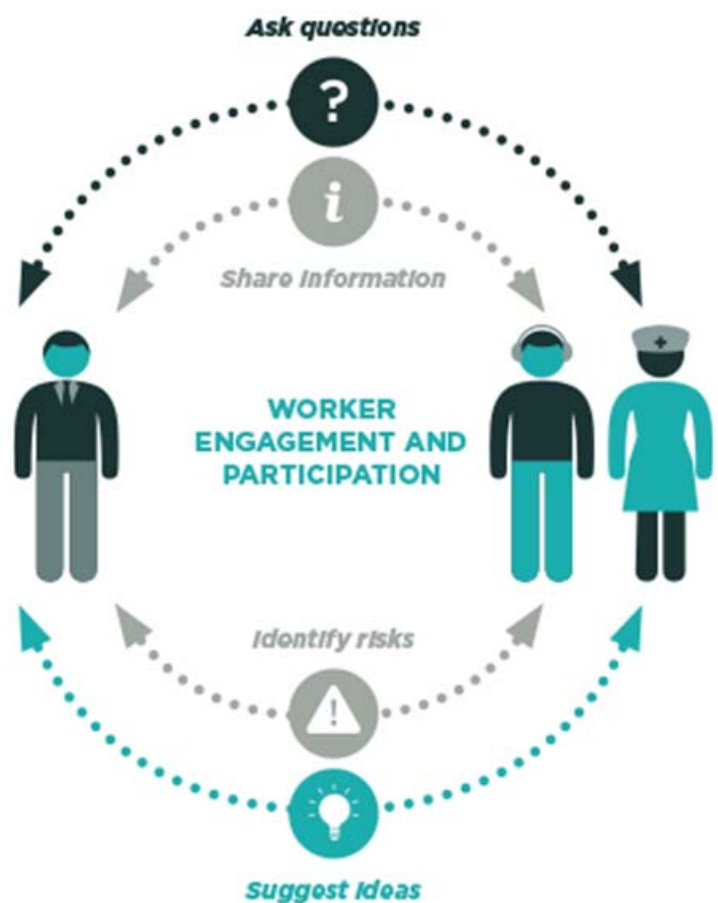
The law also makes it clear when you must engage with workers.

#### *When is engagement required?*

You need to engage and consult with workers who are directly affected by a matter relating to health and safety.

This includes when:

- Hazards are identified and assessed,
- Making decisions about:
  - Addressing risks
  - The adequacy of staff welfare facilities
  - Monitoring worker health and work conditions
  - Providing information and training to workers
  - Procedures for resolving work health or safety issues,
- Determining work groups, and
- Proposing changes which may affect the health and safety of workers.



You must also engage with your workers when developing ways for workers to participate in improving work health or safety on a day to day basis.

### Participation

All businesses should have planned, well-known ways to support their employees' participation in workplace health and safety on a day-to-day basis.

For example, by being able to make suggestions or speak up about concerns.

Employee participation in health and safety can be done in some ways, it all depends on what works best for your business and the employees. Things are likely to work better if you have a mix of formal and informal ways for workers to contribute.

A well-established way to support worker participation is by electing Health and Safety Representatives (HSRs), or setting up a Health and Safety Committee (HSC).

The Act sets out how an HSR or HSC will work. You can view more detail at:

[www.business.govt.nz/worksafe/hswa/working-together/business/business#understanding](http://www.business.govt.nz/worksafe/hswa/working-together/business/business#understanding)

# ACC Residual Levies to end April 2016



The ACC Minister has signalled that the residual levies will be stopped from 1 April 2016.

ACC charges the residual levies on the Work, Earners, and Motor Vehicle accounts and these levies cover all claims pre-dating 1999.

The residual levies on average make up a third of your current employers ACC bill, so the impact on paper should be quite impressive.

Unfortunately it is not quite so straight forward or lucrative.

The ACC Minister has been very deliberate in using the words "redistributive effect", which means that when the residual levy stops, the existing levies will be recalculated and the savings will not be just a case of removing your residual component. Instead, and as quoted by the Minister, 47% of all businesses will actually receive an increase in their ACC levies as a result of stopping the residual levies.

ACC will be re-calculating the claims data for all levy codes which would mean a fairer and more accurate allocation of cost to those industries that have a lower accident history versus those that have a lot of accidents. Unfortunately this also means that if your industry is notorious for accidents and claims, you will pay for it.

Experience rating, which is the penalty / discount a business, can get, depending on its claims activity, is only ever applied to the work levy

not the residual levy. So by removing the residual levy which would in-turn increase your work levy, the impact of experience rating will also increase. This is great if you have a discount already, but it will end up costing you more if you have a penalty.

One bit of good news is that if your business is currently in one of the two ACC discount schemes, such as the Workplace Safety Discounts or the Workplace Safety Management Practices then this discount will also increase proportionally.

Parliament has passed the Accident Compensation Act (Financial Responsibility and Transparency) Amendment Bill which supports the Minister's recommendation to stop the residual levy from 1 April 2016.

The ACC Minister has indicated that the ACC Board has recommended reducing the work account levy further next year in line with stopping the Residual Levy. This has been done in part to reduce the number of companies that will end up paying more i.e. instead of 47% of businesses getting an increase, it is anticipated only 25% of businesses will get an increase.

What does this mean for the Crane Operators?

Levy Code	Description	Year	Work Levy	H & S Levy	Residual Levy	Total
42240	Steel Erection (covers tower crane assembly)	2015 / 16	\$2.44	\$0.08	\$0.63	\$3.15
		2015 / 17	\$3.00	\$0.08	-	\$3.08
42101	Hire of Construction Machinery & Cranes with operator	2015 / 16	\$1.98	\$0.08	\$0.52	\$2.58
		2015 / 17	\$2.48	\$0.08	-	\$2.56

As you can see by the table above, crane operators are only marginally better off with the Residual Levy being removed. The Work Levy is actually increasing by an average of 24%.

Where to from here?

- None of this has been signed off yet as the Minister will most likely do this in the New Year.
- From 1 – 30 October 2015 ACC undertook a public consultation into what should happen with next year's levies, for which the Crane Association has lodged a submission. Should you wish for a copy of this submission please email [martin@managecompany.co.nz](mailto:martin@managecompany.co.nz)
- In a separate work programme we will be asking ACC to provide evidence why crane operators are in essence receiving a 24% increase in their work levy. We wish to understand the justification of this increase to determine whether it is fair and equitable.

## About Manage Company

Martin Wouters is the Managing Director of Manage Company which is a risk management firm specialising in ACC.

With partnerships that span over 15 industry Associations, numerous accounting firms and more than 1,000 businesses across New Zealand, the average ACC saving that Manage Company has made for its clients over the last 5 years is 23% and for 2015, 41%.

Martin Wouters

[martin@managecompany.co.nz](mailto:martin@managecompany.co.nz)

[www.managecompany.co.nz](http://www.managecompany.co.nz)

0800 RISK NZ (747 569)



# From the Archives

The following articles have been selected from Crane Dispatches January 2005 and reading them, it seems that not much has changed in the last ten years.

## Certification of Operators

This matter is still under discussion and rests with OSH. It is interesting to note that the accident that caused the "panic" to certify operators occurred in July 2001 but the issue of certification has still to be resolved.

## Code of Practice for Cranes

Following extensive discussions over a two-year period the amendments to the Code are in the final consultation phase, and it is hoped will be signed by the Minister in the next month or so.

## Weighing tolerances

There have been some discussions about this matter over the past two or three months, and we anticipate that any problems will be resolved shortly.

## Overweight permit manuals

The following note has been received from Lynn Sleath at Transit New Zealand and we ask that you note the contents: "Lynn Sleath from Transit New Zealand would like to advise members that Transit has recently issued the following: Overweight Permit Manual Amend-

ment No 10; Overdimension Vehicle Route Maps Amendment No 1. Transit also expects to issue Overweight Permit Route Maps Version 2 (a completely new manual and ring binder) before Christmas.

Since Transit has only recently moved the databases of some 900 manual holders from Standards NZ to a new outsourcing agent, Lynn would really like to have an assurance that all holders of manuals have received the updates. Anyone that holds one of these manuals and has NOT received an update should contact Lynn Sleath at Transit New Zealand, Email [lynn.sleath@transit.govt.nz](mailto:lynn.sleath@transit.govt.nz) clearly stating which manual and their current mailing address. And anyone that doesn't hold a manual but would like to purchase one can do so via Transit's website [http://www.transit.govt.nz/technical\\_information/index.jsp](http://www.transit.govt.nz/technical_information/index.jsp) where they will find a form that can be emailed back to Transit. Lynn Sleath"

## Land Transport New Zealand replaces LTSA

From 1 December 2004 a new agency (Land Transport New Zealand) came into being. Therefore, from that date the Land Transport Safety Authority ceased to exist. From an operational point, we do not envisage any major changes and we look forward to continuing to working closely with them on matters that affect the crane industry.

# *weigh* *check*

[www.weighcheck.co.nz](http://www.weighcheck.co.nz)

## Weighcheck Mobile Response

**Weigh your asset onsite at your premises! Independently audit and verify loads!**

**We can weigh:**

- Mobile Cranes
- Trucks and Trailers
- Mobile Machines & Plant
- Auditing board scales & payloads.
- A number of configurations up to 130,000kgs
- Rows of 4 & 8 transporters and converter dollies
- Six axles at the same time
- Individual weigh pads capable of a load capacity up to 15,000kg each!

**We offer:**

- Fully mobile independent technicians and engineers.
- Advice and assistance with roading new vehicles or machinery.
- Setup of new vehicle imports or builds.
- Weigh verification of asset using internationally recognised standards and procedures (complies with NZ Weights and Measures, OIML R-76/EN45501, CE-M 3000 Approved).
  - Certified weighing report - used by operators, management and authorities to verify axle weight ensuring vehicle meets standard legal limits or overweight permit conditions.



**Contact us on: 09 415 9060 for more information**

**TSL** TRANSPORT SPECIFICATIONS LIMITED



## Safe; Reliable and Accurate Clearance Measurement

LORD Civil are proud to introduce the safe and cost effective Suparule range of handheld ultrasonic measurement meters designed to accurately measure overhead cable heights, sag and clearances with the minimum of effort.

These handheld units are the present day alternative to measuring poles and laser systems that either place operators in harm's way or are difficult to operate accurately. From a deployment perspective operators of the Suparule are easily trained and the push button operation ensures ease of operation

What makes the Suparule range unique is that the technology utilises ultrasonic signals to identify the distance to a range of vertical and horizontal targets. The meter emits from the cone transmitter a short burst of sound; the instruments processor then calculates the time taken for the sound to be reflected from the target back to the Suparule Meter. The result is then shown as a distance measurement on the user display. Additionally the height of stacked cable targets can be identified separately. The unit features temperature compensation and with features such as this deliver the 0.5 % accuracy of these units

From a capability perspective the Suparule can identify up to 6 stacked aerial cable targets down to 2.5 mm at 10 metres and out to 25 mm cables at 23 metres height (model dependent) along with horizontal targets out to 45 metres (when used with the DT80 dynamic target)

## KEY FEATURES

- Quick Measurement saving time and money
- Extremely safe — No physical contact to obtain the measurement of overhead conductors
- Very Accurate — measures to accuracy of 0.5%
- Simple and easy to use – 3 button operation
- Compact and light weight
- Maintenance free
- 2 year Warranty



***"No better instrument for cable distance measurement"***

**Call us now to discuss**  
**0800 485 990**  
**[www.lordcivil.com](http://www.lordcivil.com)**





## INTRODUCING THE WORLD'S TALLEST SELF-PROPELLED BOOM LIFT.

The new 1850SJ has more reach, better stability and a larger work envelope than any lift in its class. Get up to 19 stories of working height and an innovative chassis that can be extended front and back. Featuring 230 kg/450 kg platform capacity, the 1850SJ is the most powerful boom in the industry.

Learn more at:

[www.jlg.com/au/1850SJ-6](http://www.jlg.com/au/1850SJ-6)

## Tall order from JLG customers inspires world's tallest self-propelled boom lift



**The world's tallest self-propelled boom lift arrives down under and is set to take aerial work platform versatility and performance to new heights.**

Widely praised and eagerly sought after in North America and Europe since its industry debut at CONEXPO-CON/AGG 2014 in Las Vegas in March, the JLG 1850SJ Ultra Boom wears the crown of world's tallest self-propelled telescopic boom lift.

Engineered to deliver an unmatched working height of 58m and an unequalled work envelope of over 84,950m<sup>3</sup>, (or nearly 85,000) this latest innovation in JLG's line of Ultra Boomlifts reaches more applications at unprecedented heights and moves aerial work applications into areas previously reserved for truck-mounted booms.

The result of JLG's response to customer feedback, which identified the need for a taller boom that could work on a wider variety of jobs in a broad array of conditions, JLG's 1850SJ Ultra Boom combines valuable extra reach with easy transport and maintenance to deliver the ultimate in ready access.

"Since the 1850SJ Ultra Boom's launch in early 2014, users have recognised the flexibility this machine gives them for solving access challenges and how well it rounds out the JLG boom lift offering," explained JLG Australia & New Zealand Product Manager, Arron Cooper.

"While the 1850SJ provides 10.6m of additional vertical reach and substantially more work envelope than the 1500SJ Ultra Boom, which has 45.7m of vertical lift, it doesn't replace it; together, our 1850SJ, 1500SJ and 1350JP booms give users flexibility to choose the right boom lift to meet the needs of specific applications."

This lift features a five-section telescopic boom that extends to full height in less than five minutes and swings 360 degrees, plus a jib that achieves lengths between 3.96m and 6.1m with an articulation range of 120 degrees. The JLG 1850SJ Ultra Boom achieves a total horizontal reach of 24.38m.

The telescopic jib can also extend and retract to deliver an up-and-over capability and telescope into structures with precision and agility, making it invaluable where workers need to be repositioned at height - without the need to reposition the machine.

"The huge work envelope, which above 45m is greater than any other self-propelled boom, means users can reduce the number of times they must reposition the machine while working at the high end of the reach," Arron Cooper said. "The other big advantage is the horizontal reach the boom provides; it's unmatched in the industry and lets operators to work around obstacles more easily."

JLG's design has made it easy to move the JLG 1850SJ Ultra Boom. Powered by a 99.8 hp turbo diesel engine, the 1850SJ offers three selectable steering modes including four-wheel steer, and standard four-wheel drive, for easy on site manoeuvrability.

When it's time to hit the road, transportation is easier, less time consuming and less costly with the JLG 1850SJ Ultra Boom. It's ready for transport in a couple of minutes thanks to retractable axles. The 1850SJ's compact design allows transportation on a quad axle float without an overweight permit or complex oversize load logistics.

"The 1850SJ Ultra Boom ticks all the boxes for performance, efficiency and versatility and will be invaluable for high level aerial work on a diverse range of projects and tasks in civil and commercial construction, ports and container facilities, building maintenance, refineries and churches," Arron Cooper concluded.

"Designed specifically to meet the needs of customers for work at height, we expect it will meet with the same success here as it has in markets overseas."

To learn more about the innovative and exciting new JLG 1850SJ Ultra Boom, or JLG's many other products, visit [www.jlg.com.au](http://www.jlg.com.au) or call JLG Australia on 131 554 or JLG New Zealand on 64 9276 1278.





Snitchinc GPS tracking have been monitoring vehicles since 2005. Over the years we have developed an innovative technology with reporting and reminders for fleet management.

In 2010 we were successful at the Westpac Waitakere Business Awards by winning the Unitec Innovation in Business Award. Since then we have grown with many satisfied customers and have recently updated and upgraded the platform to the latest technology available to ensure our customers have the most accurate monitoring possible.

We have kept the system easy to use for quick to find and no fuss information and reports. There are 15 types of reporting that can be set up as scheduled reports that are automatically emailed to you. These can be set to daily, weekly or monthly intervals. The reporting includes time on site, off road mileage and export raw data as a CSV report as well as many more helpful to managing your business.

Further to reports geo-fencing will give alerts that vehicles are entering and leaving areas such as addresses, suburbs or cities. You can also run time on site reports for any geo-fenced area, perfect for billing or customer queries.

Mapping will show vehicles in real time updating every 30 seconds or 200 meters. Our revolutionary true path tracking feature measures live data and lets you see the vehicle history in extreme detail and accuracy not offered on other platforms.

Our system has been developed to keep you in touch with your fleet for reduced operating costs, provide accurate billing of field staff, and resolve customer and operational queries accurately and promptly.

Auckland based, we have a support team to help with any questions and full training throughout the country. We can train your new staff members on the full system and run refresher courses for existing staff. When you buy we organise the installation and staff training throughout the country. We are very customer orientated from daily support, training and accounts to help monitor your larger fleets.

Our pricing is very competitive, with discounts for larger fleets. We realise that cost is a large factor when deciding to move to GPS tracking. However, once you have experienced the advantages of encouraging accountability of your staff, the cost-saving in fuel along with knowing where your fleet is in real time plus the reporting, reminders and alerts available, the investment will be well rewarded.

# Vehicle Tracking Redefined

## Better Information Better Decisions

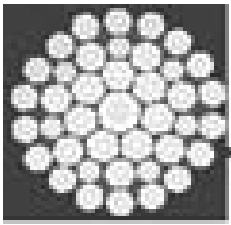


[www.snitchinc.com](http://www.snitchinc.com)



Level 3, 109 Dominion Road  
Mount Eden, Auckland 1024

**0508 SNITCH (0508 764 824)**



# D.M. STANDEN LTD

THE ROPE CENTRE - SLINGMAKERS CENTRE

Your partner in lifting and safety for:

- Wire Rope • Chain slings • Height Safety
- Round and Web Slings
- Equipment testing & inspection

Expect quality.

Combined years of experience ensures you get specialised advice and practical solutions, using the best products for all Crane, Construction and Fishing applications.

[www.ropecentre.co.nz](http://www.ropecentre.co.nz)



Proud members of:



73 The Concourse Henderson  
p. 09 837 7100 f. 09 837 7101

e. [sales@ropecentre.co.nz](mailto:sales@ropecentre.co.nz)

w. [www.shop.ropecentre.co.nz](http://www.shop.ropecentre.co.nz)



# *Join one of New Zealand's most convenient truck stop networks*



**Make the most of your Crane Association membership  
and sign up to a Caltex StarCard® account today!**

## ■ *Enjoy all the benefits of the Caltex truck stop network*

With more than 70 Techron® D diesel truck stops across the country, Caltex has got your fleet covered from the ports of Auckland to the Canterbury plains – and beyond.



As well as having one of the largest truck stop networks in the country, Caltex has also been upgrading many of their truck stops over recent years so you and your fleet can enjoy the benefits of a modern and efficient truck stop network:

### **MORE REFUELLING LANES**

Traffic flows faster, cutting down your fleet's waiting time.

### **CALTEX DIESEL WITH TECHRON® D**

Less foam makes refuelling cleaner and faster for your fleet.

### **HIGH FLOW HOSES**

With a max flow rate of 120 litres per minute, refuelling's faster than ever.

### **BIGGER FUEL TANKS**

Means more fuel is available any time – day or night.



To access Caltex's network of truck stops you'll need to sign up to a Caltex StarCard® account. Make an enquiry today, email [info@cranes.org.nz](mailto:info@cranes.org.nz) for an application form.



## ■ *Enjoy easy online fleet management*

With a Caltex StarCard® account you'll enjoy easy online fleet management with visibility over all your Caltex fuel costs and simplified paperwork – so you can spend more time driving your business than running it.

### **Caltex StarCard® Online**

Everything you need to keep your fleet running smoothly is just a few clicks away with the Caltex StarCard® Online fleet management system.

**For convenience** – cancel and order new cards, view historical billing documents and if you have odometer capable cards, you can view vehicle performance reports too.

**For security** – you can tag cards as lost or stolen and view up to date transactions every hour. You can also control the products purchased, transactions per day or month, change card balance limits and change PIN numbers.

**For flexibility** – you can separate and manage your cost centres and account set ups and transfer cards between your accounts.



## ■ *Enjoy access to a large network of facilities*

As well as being accepted at over 70 Caltex truck stops nationwide, Caltex StarCards are also accepted at 10 dedicated Caltex lubricant distributor stores in key districts.

Caltex StarCards are also accepted at 150 Caltex and more than 80 Challenge service stations across New Zealand.

More facilities means greater reliability and efficiency for you and your fleet.



### **Caltex Lubricant Distributors**

#### **Whangarei**

Trimac Services  
(09) 438 0258

#### **Auckland**

Auckland Oil  
(09) 525 0830

#### **Waikato, Western Bay of Plenty, Coromandel**

K&L Distributors  
(07) 849 2943

#### **Eastern Bay of Plenty**

Bay of Plenty Supplies  
(07) 349 2090

#### **East Coast**

Eastland Oil Distributors Oil  
(06) 868 6626

#### **Lower North Island**

Diesel & Turbo Wellington  
(04) 568 9218

#### **West Coast**

Greymouth Equipment Centre  
(03) 769 9060

#### **Canterbury, Nelson, Marlborough**

HDPS  
(03) 344 2258

#### **Otago**

McKeown Group  
(03) 433 1022

#### **Southland**

Invercargill Oil Shop  
(03) 218 2124



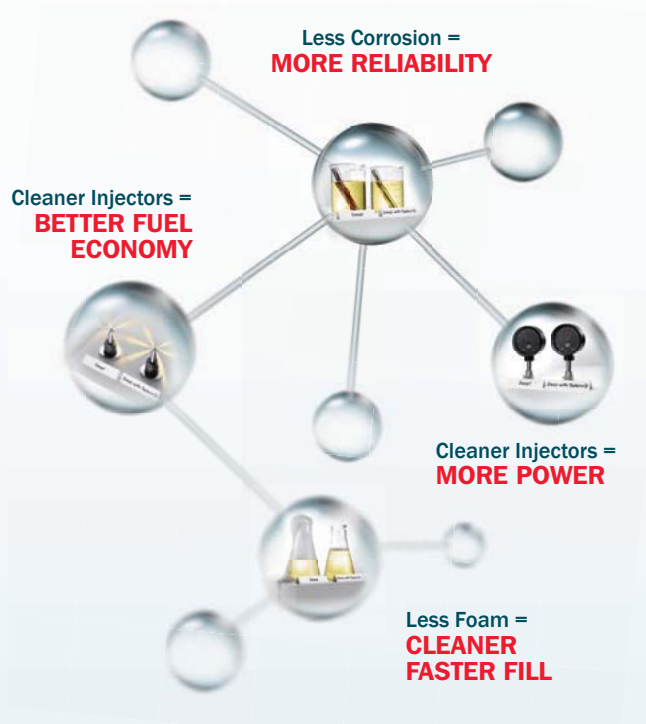
Caltex truck stops and service stations



## ■ *Enjoy quality products*

### **Caltex Diesel with Techron® D**

Fuelling up at Caltex means you're filling your tank with the proven cleaning power of Techron helping keep your engine parts clean for optimum performance.



### **Caltex Lubricants**

With a Caltex StarCard® you can purchase a large number of quality lubricant products through your local Caltex lubricants distributor. Enjoy knowledgeable service and premium quality at a competitive price.

**Delo®** ***Havoline®***

### **Diesel Exhaust Fluid**

With a Caltex StarCard® you can purchase GoClear diesel exhaust fluid at these truck stops:

**Caltex Bombay, Auckland**  
Mill Road  
Bombay

**Caltex Rolleston, Canterbury**  
25 Hoskyns Road  
Rolleston

**Caltex Otorohonga, Waikato**  
Corner Progress & Huiputea Drive  
Otorohonga

**Caltex Invercargill, Southland**  
Corner Mersey and Spey Streets  
Invercargill

**Caltex Old Hutt Road, Wellington**  
208 Old Hutt Road  
Wellington





## ■ *Enjoy real savings*

### Crane Association

Make the most of your Crane Association membership discounts:

Caltex product	Pump price discount
Petrol at a Service Station	6.9 cents off pump price per litre
Petrol at a Diesel Stop	6.9 cents off pump price per litre
Diesel at a Service Station	6.9 cents off pump price per litre
Diesel at a Diesel Stop	11.5 cents off pump price per litre
GoClear diesel exhaust fluid	11.5 cents off pump price per litre

Pump price means the retail sale price advertised to the public for the relevant product on the pump at the premises at the time of the Caltex StarCard transaction. Pump price discounts include GST. Discounts offered cannot be used with any other fuel discount offer. Chevron NZ reserves the right to review and alter the amount of the discounts and to do so for any reason without limitation including the change in consumption levels, developments in the general market place, the imposition of taxes, charges and costs for supplying the product.

### Card Fees

There are no transaction fees, your first card is free and cards last for two years with subsequent ones costing just \$11.25.

### Up to 50 days free credit!

With a Caltex StarCard® account you can operate on up to 50 days free credit (dependent on credit application approval). There's also multiple direct debit options to help you manage your cash-flow. Account payment is by direct debit only.

## ■ *Enjoy fuelling with the right partner*

With a Crane Association Caltex StarCard® account, your account will be managed by a Caltex commercial business consultant, who is well versed in the transport industry and keen to understand your needs. Caltex also has a dedicated customer services team who are always eager to help.

**So make the most of your Crane Association membership and sign up to Caltex StarCard®. Email [info@cranes.org.nz](mailto:info@cranes.org.nz) for an application form and start enjoying the journey with Caltex.**



Chevron New Zealand  
Caltex Card Marketing  
P: 0800 733 835  
E: [nzservice@chevron.com](mailto:nzservice@chevron.com)

[caltex.co.nz](http://caltex.co.nz)



## Win a 21 day Outward Bound scholarship worth up to \$6,500

This once-in-a-lifetime experience will give you the building blocks to reach your full potential in your trade and personal life. You will team up with like-minded apprentices across a variety of trades and get the chance to develop confidence, leadership and teambuilding skills.

Based in tranquil Anakiwa in the Marlborough Sounds, the BETA Bound experience will stretch your physical and mental limits in a fun environment.

### Things you need to know

- The programme runs from 5-25 June 2016
- Entries close 5pm Friday 22 April 2016
- All programme and travel costs will be covered by The Skills Organisation

### What you need to do

1. Get your boss on board and check that you can be released from work from 5 to 25 June 2016
2. Fill in the application form at <http://livemail.livelinkconnect.com/em/forms/subscribe.php?db=453728&s=156931&a=40562&k=60353b3> telling us why you deserve to go

Go on, enter now and unlock your leadership potential with Outward Bound.



**NZQA REGISTERED ASSESSOR | OSH & NZQA APPROVED**  
over 40 units

CRANES, LOAD LIFTING, RIGGING TO  
LEVEL 5, ELEVATED WORK PLATFORMS,  
STEVEDORING INDUSTRY EQUIPMENT,  
FORKLIFTS & 'F' ENDORSEMENTS



P: 09 575 9738 or 021 752 034 | E: [atsltd@xtra.co.nz](mailto:atsltd@xtra.co.nz) | W: [assess-train.co.nz](http://assess-train.co.nz)



# Conference 2016 - Nelson



## SAFE + LONG LASTING LUBRICATION SYSTEMS

Kirkpatrick Wire Rope Lubrication Systems are excellent for Wire Rope & Cable Lubrication and Cleaning. In only one application, wire rope can have its surface and groove pattern scraped clean of product build-up and grit, while at the same time new lubricant is uniformly applied to the newly-cleaned surface. Coating product then fills any open spaces within the groove pattern, and internal strands open to receive it.

This is accomplished as the wire rope passes through a controlled, 100% pressurized, immersion within the Internal Seal Lubrication Chamber. Surface moisture trapped within the internal strands is displaced and replaced with the newly applied wire rope coating product



"The Kirkpatrick wire rope lubrication system is a safer alternative than the previous method used because it does not require personnel to place grease on their gloves and wipe the cable."



Fluid Film® NAS penetrates, lubricates and is an excellent corrosion prevention system. Fluid Film NAS is nontoxic, long lasting, thixotropic liquids that have been used for over fifty (50) years in the highly corrosive marine environment, for bulk handling, cargo ships, boating and offshore drilling rigs.

Fluid Film NAS has been successfully utilised in the aerospace, aircraft and automobile industries and for home maintenance. Fluid Film NAS is an industrial grade lubricant and industry grade corrosion protection and rust inhibitor.

For more information:  
**CONTACT US TODAY**

Phone: 09 473 6505  
sales@megadistributors.co.nz  
www.megadistributors.co.nz

**MEGA DISTRIBUTORS**

crane

highest standard – safety first