



Chief Executive's report

Pike River Mine

The President has mentioned the disaster at Pike River. Coming from a small mining community myself I know how close-knit these communities are. However, this does not take away the incredibly sad feelings that will continue for a long period and we can only offer our sympathy to all those affected by this event. In the case of the earthquake you can replace buildings but in this case you cannot replace lives. As this is the last newsletter for 2010 I would also take this opportunity to thank all members and councillors for their ongoing support and guidance during 2010 and wish you all a very merry Christmas and happy new year.

Crane Project of the Year

In the November newsletter we sought views regarding the Crane Project of the Year and the council considered the submissions that were received at its last meeting. Council has decided that there will not be any change for 2011.

This is an opportune time to remind companies that expressions of interest need to be received in our office by 28 February.

2011 Conference

Unfortunately we have not yet finalised the programme for the conference and can't publish it. We hope to do so in February 2011, together with the registration form. The council is striving to maintain the registration fee at a level similar to this year.

Sponsorship for the conference started at a great rate but has since slowed. There are still a number of sponsorship slots available and companies should contact our office for details.

Road User Charges

We have completed our submissions to the authorities and have made our views known to officials. We wait now and see what comes back to us from the corridors of power.

Christmas shutdown

The office will close at noon on 23rd December and will re-open on Monday 17 January 2011.



From the President

2010 will be remembered not only for Canterbury's devastating earthquake but even more for the tragic deaths at the Pike River mine. Many people will soon be on holiday and I think we should all reflect on what for many (especially on the West Coast) will not be a celebration of a season of good cheer. The Crane Association conveyed its sympathies on behalf of members to all those affected by this tragic event.

For the Association and my first 6 months as President I can say that we are indeed fortunate to have councillors and members who are dedicated to the industry because they have stepped up when I have been unable to and I thank them all for their contribution. Next year is going to be even busier as we are already planning to start a number of projects. Remember that we will meet members at The Sebel in Tauranga on the evening of 28 February. Only a few have shown interest. The council want to know the issues that affect you and this is an opportunity to exchange ideas and find out what the executive does for you.

Finally, I wish all members, their staff and families all the very best for a safe and happy Christmas and a bright and prosperous 2011.

T Williams,
President

Membership

In the last month the following company has joined the Association as Full member:

- Taslo Engineering Ltd, Rotorua

The following have ceased to be members:

- The New Zealand Drug Detection Agency;
- Mick Stoneman

Newsletter of the
CRANE ASSOCIATION
OF NEW ZEALAND INCORPORATED
21-23 Andrews Ave, Lower Hutt
PO Box 30 074, Lower Hutt
New Zealand
Telephone: 04 569 9799
Facsimile: 04 569 6969
Email: info@cranes.org.nz

■ On Site Concrete Tilt Slab (Panel) Erection

PROCEDURES AND PRECAUTIONS

This section covers the basic safety principles and procedures involved with tilt slab panel erection and is not intended, nor does it cover the full subject.

Tilt slab means a concrete element, normally cast in a horizontal position at or near its final location. It is lifted to the vertical position with one edge remaining on the casting floor.

In general a tilt slab project should be planned and set out for a particular type and size of crane in conjunction with the customer and site personnel before construction begins.

KNOW THE PANEL WEIGHT BEFORE LIFTING COMMENCES.

SLING ANGLES MUST NOT EXCEED AN INCLUDED ANGLE OF 60°.

Only cranes fitted with load weight indicators should be used for tilt panel erection.

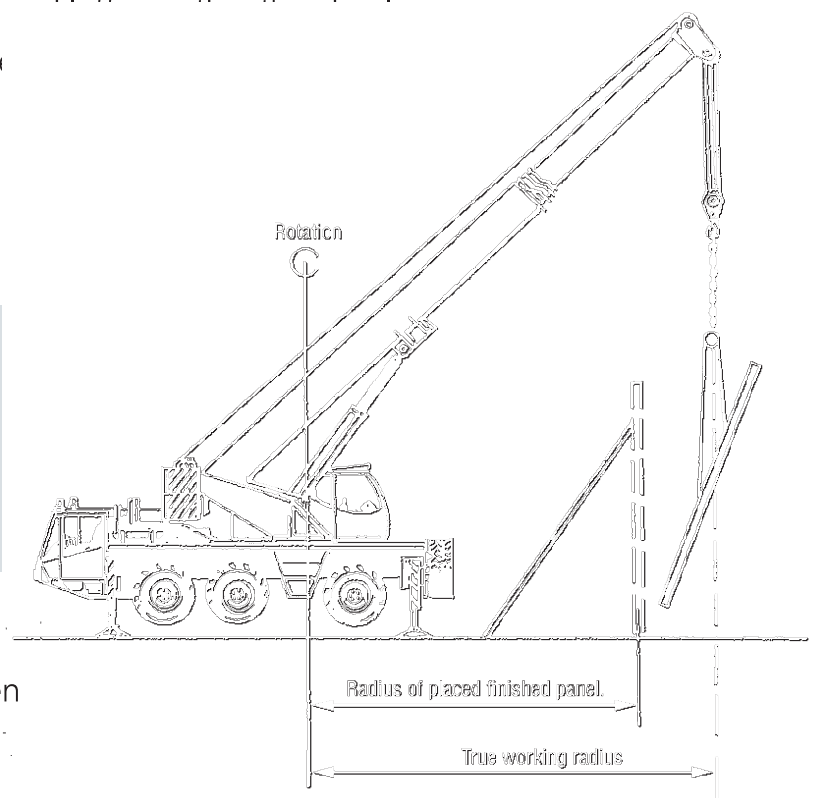
To minimise side loading of the boom the crane should be placed in a position so that the final tilting into position can be accomplished by hoisting

Wherever possible lift with the top of the panel away from the crane.

Take great care when breaking away (debonding) from the casting bed/floor.

Do NOT apply a crane load/force greater than 110% of the weight of the panel.

It is good practice to use a crane with ample capacity for the task. The larger crane can often do the job more efficiently and safely.



NOTE: The true working radius from the centre of rotation to the hook will depend on actual panel details.

CAUTION: The panel must be rigged according to the lifting design engineer's or competent person's specifications.