



Chief Executive's report

Canterbury earthquake

In the aftermath of the Canterbury earthquake and on behalf of the Crane Association's membership we hope that effects on employees of members was kept to a minimum during this time.

The numbers of companies who made known to us cranes that they could make available had it been required was encouraging.

The Earthquake Commission has appointed Fletcher Construction as main contractors for domestic repairs. The Insurance Council, covering commercial property outside of the domain of the Earthquake Commission, says at \$1.5 billion, the Canterbury earthquake is the biggest insurance event in New Zealand's history. The Council says most of that cost will involve restoring commercial buildings. I am sure that there will be ongoing work for our members in the region when the rebuilding gets underway - especially those commercial buildings.

2011 Conference

The Association's conference next year is attracting sponsors and we thank those companies and are heartened by this early response. We appreciate the generous offers being made and recognise that many are still coming through the recession more slowly than anticipated. To date we have received pledges of \$20,500 and this certainly helps keep the registration fees at a reasonable level.

The programme is almost finalised and arrangements are all in place with Rydges Lakeland Resort in Queenstown for 6th, 7th & 8th July. As in the past

couple of years delegates will book their accommodation direct with the hotel using www.rydges.com/cwp/crane



Crane project of the year

A little while ago I sought the views of members on whether or not consideration should be given to having a Crane Project of the Year as well as a Crane Lift of the Year. A number of people have made their views known and council will be considering these at the next meeting on 23 November.

From the President

Like many Cantabrians, I have been involved in the scramble to take stock and recover after the September 4 earthquake. Many of you may know that I work for the Lyttelton Port of Christchurch. I was in Perth, Western Australia, attending the CICA annual conference when the earthquake happened and returned to assess damage to the port's infrastructure.

Since the event I haven't been able to devote as much time to Association business as I would have liked because of the workload. But I do thank councilors and members of the Association who have stepped up during this period to look after the affairs of the Association.

It was fortunate that there was no loss of life at the time of the earthquake and although it will be very expensive over the next few years repairing the damage, the positive is the work that will be generated.

*T Williams
President*

Newsletter of the

CRANE ASSOCIATION
OF NEW ZEALAND INCORPORATED
21-23 Andrews Ave, Lower Hutt
PO Box 30 074, Lower Hutt
New Zealand
Telephone: 04 569 9799
Facsimile: 04 569 6969
Email: info@cranes.org.nz

2011 conference - interest in sponsorship is generous and early, nearly 9 months out...

Membership increase

Since the last list of new members was published in February 2010 the following companies have joined the Association:

Full members:

Mules Construction Ltd, Auckland;
Crane Co NZ Ltd, Whangarei;
Hughes Construction Ltd, Auckland

Associate members:

HTC Specialised Tooling Ltd, Auckland;
Construction Safety Ltd, Timaru;
The Machine Security Co Ltd, Auckland;
Design Engineering Ltd, Timaru;
Tadano Oceania Pty Ltd, Queensland;
CreditWorks Data Solutions Ltd, Auckland;
Snitch Inc, Auckland

The following companies have ceased to be members:

Marriott Consulting Engineers Ltd, Auckland;
Robt Stone & Co Ltd, Auckland;
Buller Port Services Ltd, Westport.

Road User Charges

We consider that our industry is being unfairly treated under the Road User Charges laws. This has been a discussion point for some time. In particular we dispute the amount of charges being levied for the larger all terrain cranes.

A considerable amount of work has been put in (particularly by Ron Brown) and we have had meetings with officials from the New Zealand Transport Agency and Ministry of Transport. Another meeting is scheduled for this week at which time the details of the paper that has been prepared for submission to cabinet will be discussed.

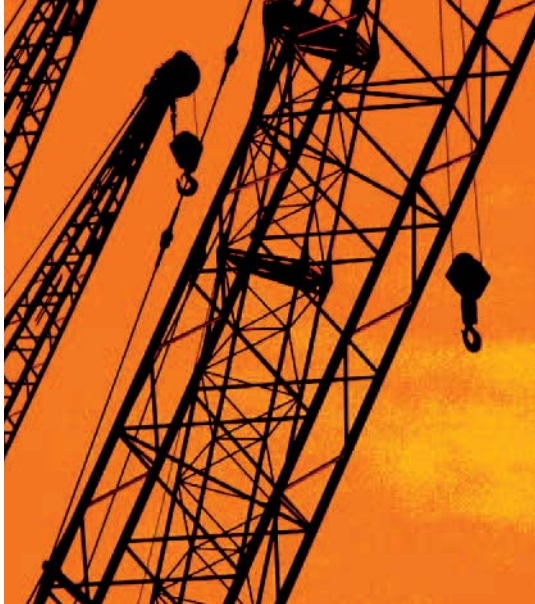
We anticipate that there will be further opportunity for discussions in the middle of next year before the matter is signed off by the Government.

This is a very complex area and is the first major review since the current act came into force back in the late 90's.



Raising the roof. Titan Cranes' Demag AC615 and Demag AC100 lifting a house at Hutt Hospital, Lower Hutt. (Photo credit: Steven Thomlinson)

CRANE ASSOCIATION MEETING/ DINNER IN TAURANGA



The Crane Association of New Zealand council will be meeting in Tauranga on 1 March 2011.

We would like to take the opportunity to invite Crane Association members and your staff to come along and discuss topical issues with council president Tristan Williams, council members and chief executive Ian Grooby on the evening prior to the meeting.

Ian Grooby will introduce Tristan and councillors and there will be time for questions and discussion before an informal buffet dinner.

DETAILS

- Time:** Gather at 6.00pm
Introductions / Q&A 6.15pm
Dinner at 7.30pm
- Date:** Monday 28 February 2011
- Place:** The Sebel
Trinity Wharf
Tauranga
- Cost:** \$60 + GST per person for buffet dinner

BOOKING AND PAYMENT

For catering purposes please complete the form below as soon as possible but no later than Friday 8 January and post, fax or e-mail to Ian Grooby at the address below. You will be sent an invoice.

SEND TO

Ian Grooby – Chief Executive
Crane Association of New Zealand (Inc)
P O Box 30 074, Lower Hutt
Tel: (04) 569 9799
Fax: (04) 569 6969
E-mail: info@cranes.org.nz
www.cranes.org.nz

Company name

Address

.....

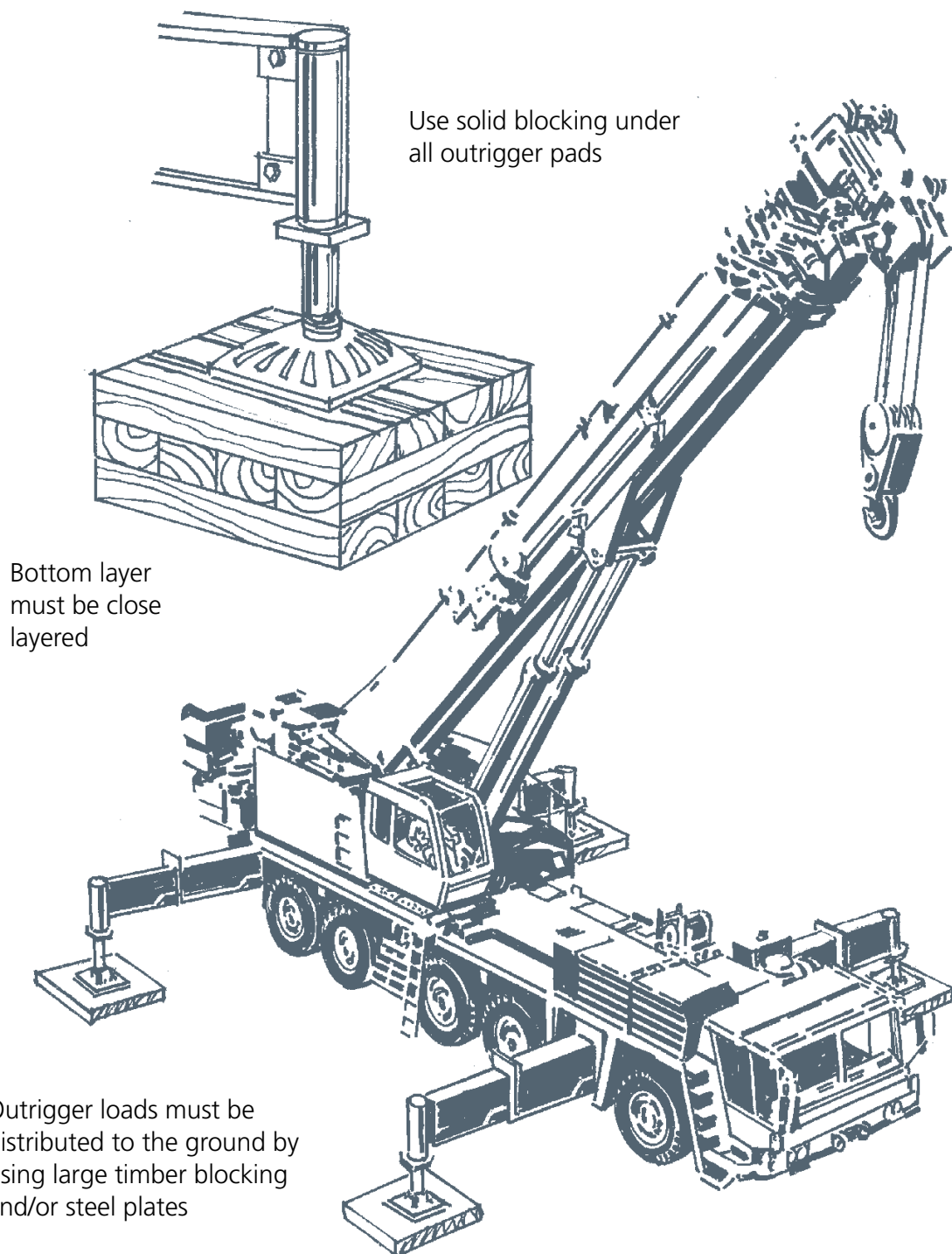
.....

Contact name

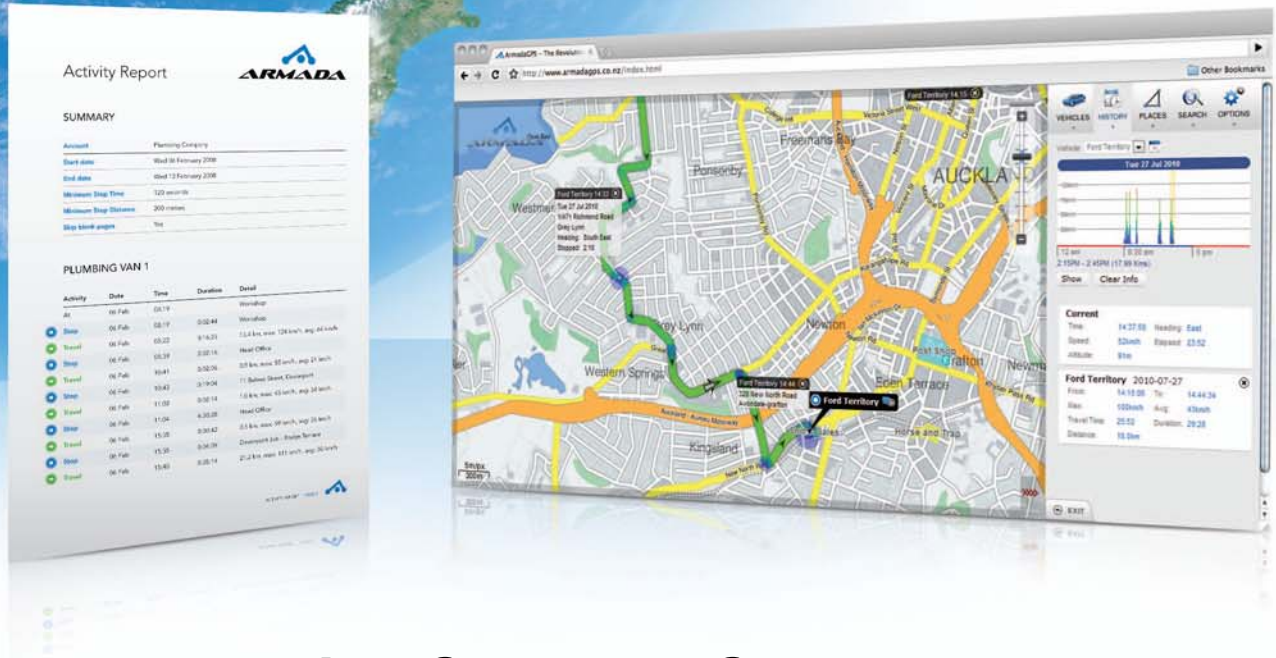
Dinner number

■ Setting up the Crane

BLOCK THE CRANE TO SUIT THE GROUND CONDITIONS



GPS TRACKING.
FLEET & ASSET MANAGEMENT.



Invest in the future of your company.

Improving efficiency is the best way to increase profit in any business. Vehicle Tracking is the best way to improve the efficiency of your fleet.

Increase your profit by decreasing your fleet operating costs.

Maximise vehicle productivity and reduce downtime.

Provide your customers with World Class customer service.

To find out more,
call **0508 764 824**

armadagps.co.nz

"Snitch Inc is an innovative supplier who has gone the extra mile to improve our business.

In an increasingly competitive market place they are providing us with a competitive advantage and significant operational efficiencies."

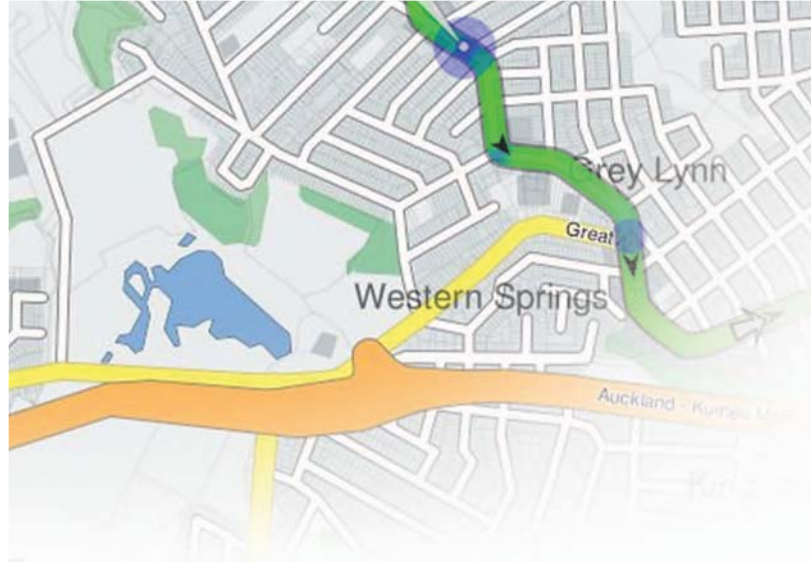
Neil Wilson
Messenger Services Ltd



"Having ArmadaGPS in our 27 service vehicles has enabled us to direct incoming jobs to the nearest technician in any given area, thus making the Field Service Department more productive. ArmadaGPS also reduced our costs both on vehicle wear and tear and mileage."

Michelle Candler
Auckland Dispatch Supervisor





\$1,295 +GST

Tracking Only
Excludes installation

\$22.00
Basic Monthly Charge

\$30.00
Standard Monthly Charge

\$36.00
Advanced Monthly Charge

\$995 +GST

Garmin Messaging & Navigation Add-on

Includes installation
if installed with SA87

\$6.00 +GST
Additional per vehicle per month

VISIBILITY

View the current location of your vehicles on easy to read maps. Instantly view the vehicle status, including ignition off, idle or moving. View vehicle history and driving style to ensure efficient routes are taken and to monitor speed.

REPORTING

Generate clear and precise reports on your vehicles activities, from Stops and Mileage reports to Time on Site. Also run reports to show when registration and warrant of fitness are due. Print these in PDF or download them in CSV to view with Excel.

EASE OF USE

Armada GPS is extremely user friendly. With no additional software to install, Armada GPS can be used from any internet ready computer in a standard web browser. Clear maps and easy to read reports make the information simple to understand.

True Path Tracking

True Path Tracking is unlike anything else in the GPS Tracking industry. Snitch records the actual path travelled by a vehicle, rather than incremental points along the path. This provides a level of visualisation, and accuracy never before seen in GPS tracking.



True Path Tracking is now the base of the core Snitch-Armada platform, and is a key part of Snitch's future development. Snitch is leveraging this technology to make advances in monitoring and reporting on driver behaviour, by recording acceleration, braking and cornering forces, along with high resolution position and speed information.

Displaying the vehicles history, and running reports using this increased data will assist companies with saving money on vehicle wear and tear, fuel consumption, and help to prevent accidents.

The Snitch-Armada platform is leading the way in GPS tracking, and geographic reporting. True Path Tracking is a large part of this evolution into the next generation of GPS tracking technology

Messaging & Navigation

Send messages and locations directly from the ArmadaGPS map to your fleet of vehicles. Taking advantage of Garmin's Fleet Management Interface your field staff can respond using the vehicle mounted touch screen and automatically be routed to the desired address.



Packed With Features

- ✓ Web Based solution, using standard web browser
- ✓ No additional software to install
- ✓ True Path Tracking Next Generation vehicle tracking
- ✓ Vehicle History displayed on map
- ✓ Activity Reports in .pdf or .csv
- ✓ Incident Report (Crash, Panic and Alarm)
- ✓ TXT Alerts
- ✓ Multiple user access

Basic features

- ✓ Defined places (Geofence)
- ✓ Time on Site Reports
- ✓ Ignition / Auxiliary Reports
- ✓ Email Zone Alerts

Standard features

- ✓ XMLRPC API
- ✓ KML Interface
- ✓ More features soon!

Advanced features

TO ARRANGE A DEMONSTRATION OF THE POWERFUL ARMADA GPS PLEASE CONTACT US:

PHONE 0508 764 824

EMAIL sales@snitchinc.com

POSTAL Po Box 8447, Symonds St, Auckland 1150

PHYSICAL G1 326 New North Rd, Kingsland, Auckland

