

Chief Executive's report

Crane Directory

The new Crane Directory has been published and distributed to members and we still have a few extra copies available. If anyone needs another copy or two please contact our office.

As the president has mentioned numbers have grown for conference and as at the time of producing this update there are 94 delegates and 44 partners registered to attend.

We also have indications from 13 companies that they intend to display products and services.

Any company wanting a display stand should contact our office by end of June 7 to make a booking.

Crane Project of the Year

There are a number of high quality entries for the Crane Project of the Year.

Although the number of entries is down on 2009 there are several from companies who have not entered in the past and that can only be encouraging.

Code of Practice for Cranes

There is still confusion over the Code of Practice and people need to sit down and study it in detail. Over the past month or so I have fielded a lot of calls from all over (including Government agencies) who do not know its content. I have also attended 3 meetings to explain the code and will be attending another 2 in the next couple of weeks.



Annual General Meetings

The notice of the annual general meetings will be sent in the same mail, together with nomination forms for council. ONLY full member companies can nominate and second people for full member positions on the council.

Associate members select their nominees at the time of their meeting, held during conference.

From the President

Conference has a habit of rolling around fast and taking everyone by surprise. Well, this year, there seems to have been more planning than surprise, as the number of delegates who have indicated that they will attend the conference has been steadily building. There are the regulars that we expect every year but we're really pleased to find on the list of attendees that there are a number of people attending who have not previously been to conference. We feel that this is a good sign for the industry. There is much to learn and good contacts to be made each year at the event.

Although many companies are still to recover from the recession it is also significant that the level of sponsorship that has been offered is the highest ever, which makes it possible for the organising committee to keep the registration fees down.

*Malcolm McWhannell,
President*

Newsletter of the

CRANE ASSOCIATION
OF NEW ZEALAND INCORPORATED
21-23 Andrews Ave, Lower Hutt
PO Box 30 074, Lower Hutt
New Zealand
Telephone: 04 569 9799
Facsimile: 04 569 6969
Email: info@cranes.org.nz
www.cranes.org.nz

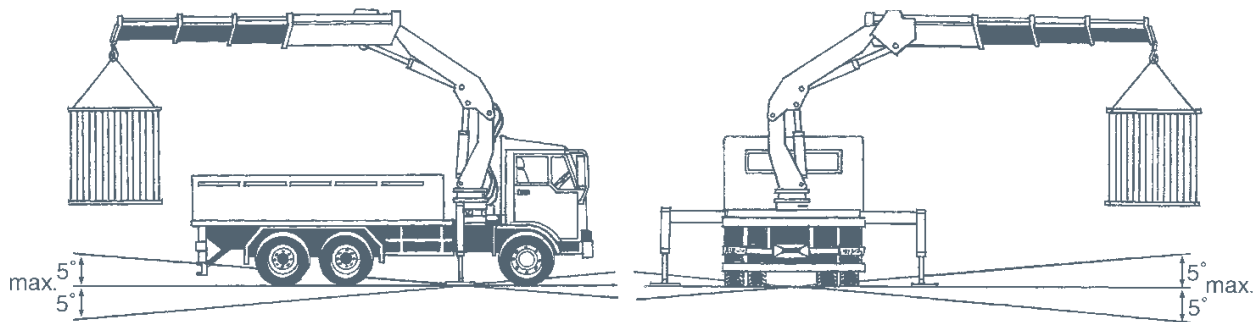
Membership certificates

The new Association membership certificates for the 2010/11 year are currently being printed and will be mailed out to all members shortly.

■ Setting Up Prior to Operating

THE VEHICLE MUST BE STABILISED CORRECTLY

- Apply the parking brake and use wheel blocks if on sloping ground.
- Do not overload the stabilisers. **NEVER** lift the truck wheels off the ground.
- **Be aware: Tyre pressures affect stability. Ensure that correct tyre pressures are maintained as recommended by the tyre manufacturer according to the weight that each tyre will be carrying.**
- Whenever possible the crane should be level but ensure that the angle of inclination in any direction does not exceed 5°.



- Warm up the power pack and oil before operating.
- While extending outrigger beams and stabiliser jacks make sure you keep them in your field of vision.
- Keep beams at full extension whenever possible.
- **Be aware: As you progressively unload your truck the stability can decrease. The weight of the load on the truck deck reacting on the tyres/stabilisers may be providing extra stability.**
- Always operate within the capacities of your rating chart
- Use blocks/plates to prevent sinking into soft ground.

WHEN UNFOLDING THE CRANE PRIOR TO OPERATION, STAND ON THE DESIGNATED SAFE SIDE OF THE CONTROLS.

OPERATING

- Keep within the working range.
- Keep the suspended load constantly in view
- Never leave the crane unattended with a load suspended.
- When calculating loads, the weight of slings and all other attachments used in the lift **MUST** be included